

# bathroom +kitchen

today

**+**  
PROJECTS  
COLLECTIONS  
FEATURES

october - december 2022



Official Media  
Partner for

SINGAPORE SANITARY  
WARE IMPORTERS  
& EXPORTERS  
ASSOCIATION (SSWIEA)



**THE POWER  
OF MATERIAL**  
about materials and  
their expressive  
potential

**TRANSFORMATION  
BY CABINETRY**  
more contemporary,  
brighter look and feel

**REDESIGNING  
FLOORS**  
redesigning the gutted  
interior of a house  
devoid of alterations



A modern black bathtub faucet with a handheld showerhead and three control knobs is shown against a stone wall. The faucet is mounted on a white bathtub. The brand name 'Kavale' is visible on the faucet handle and the bathtub rim.

Kavale

The so-called  
future is now. Achieve  
extraordinary quality.

## BATHTUB FAUCET

by KON International

[www.kon.com.cn](http://www.kon.com.cn)

Asia-pacific: [Frank.lee@kon.com.cn](mailto:Frank.lee@kon.com.cn) | China: [Jane.jia@kon.com.cn](mailto:Jane.jia@kon.com.cn) | Worldwide: [Freeman.fang@kon.com.cn](mailto:Freeman.fang@kon.com.cn)



**26 > 29**  
**JULY 2023**  
10.00AM - 7.00PM

**KLCC**

KL CONVENTION  
CENTRE, MALAYSIA

An Event Of:  
**KLAF2023**  
KUALA LUMPUR ARCHITECTURE FESTIVAL

# **ARCHIDEX®**

THE 22ND INTERNATIONAL ARCHITECTURE, INTERIOR  
DESIGN & BUILDING EXHIBITION 2023, MALAYSIA

ASIA'S LEADING ARCHITECTURE  
BUSINESS EVENT

SCAN HERE  
for more info



Featuring:

 **ECO-B®**  
ECO BUILDING & DESIGN EXHIBITION

Jointly Organised By:



[www.ARCHIDEX.com.my](http://www.ARCHIDEX.com.my)





Making its strong presence known in major building, bathroom, kitchen and design trade shows, BKT endeavours to bring to its readers the best concepts of the bathroom and kitchen industry.

BKT also continues to showcase excellence in bathroom and kitchen designs, projects and products that set standards in innovation and clients' satisfaction.



Scan to visit our website

**TRADE LINK MEDIA PTE LTD**

101 Lorong 23 Geylang #06-04 Prosper House Singapore 388399 Tel: (65) 6842 2580 Fax: (65) 6745 9517  
info@tradelinkmedia.com.sg | www.tradelinkmedia.biz



Press releases, proposals for stories, and product development literature should be submitted by email to the editor at:

[bathroom@tradelinkmedia.com.sg](mailto:bathroom@tradelinkmedia.com.sg)



On the cover:  
**DUKONO Counter Stool**

Photo credit:  
**Brabbu Design Forces**

#### Disclaimer

All advertisers and contributors must ensure all promotional materials and editorial information submitted for all our publications, must be free from any infringement on patent rights and copyrights laws in every jurisdiction. Failure of which, they must be fully liable and accountable for all legal consequences (if any) that may rise.

The editor reserves all rights to exclude or refuse submissions at any time without prior written or verbal notice if contributing parties do not provide complete text and supporting images at a minimum of 300 dpi in .tif format.

The editor reserves all rights to omit and amend press releases submitted for publication. Both publisher and editor are unable to accept any liability for errors or omissions that may occur in this process, although every effort has been taken to ensure that all information is correct at the time of going to press. Edited press releases, articles or stories are returned to contributors for check on facts at the sole discretion of the editor. No portion of this publication may be reproduced in whole or part without written permission of the publisher.

This publication is available at no charge to subscribers from industries related to the bathroom who meet the publication's terms of control. For subscribers who do not qualify for free subscription, copies will be made available, subject to acceptance by the publisher, for a subscription fee which varies according to the country of residence in the following manner:

#### Annual Subscriptions

Europe / America - SGD135,  
Japan, Australia, New Zealand, Middle East - SGD135  
Asia Pacific - SGD85,  
Malaysia / Brunei - SGD70,  
Surface mail: Singapore - SGD32 (Incl 7% GST Reg No.: M2-0108708-2)

Printed in Singapore by:  
Fuisland Offset Printing (S) Pte Ltd  
MCI (P) 043/08/2022  
ISSN 2345-7120 (Print) and ISSN 2345-7139 (E-periodical)

Other titles published by Trade Link Media:  
Southeast Asia Building  
Southeast Asia Construction  
Security Solutions Today  
Lighting Today

#### ASSOCIATE PUBLISHER

Eric Ooi  
[eric.ooi@tradelinkmedia.com.sg](mailto:eric.ooi@tradelinkmedia.com.sg)

#### EDITOR

Nicole Lee  
[bathroom@tradelinkmedia.com.sg](mailto:bathroom@tradelinkmedia.com.sg)

#### MARKETING MANAGER

Felix Ooi  
[felix.ooi@tradelinkmedia.com.sg](mailto:felix.ooi@tradelinkmedia.com.sg)

#### HEAD OF GRAPHIC DEPT / ADVERTISEMENT COORDINATOR

Fawzeeah Yamin

#### CIRCULATIONS

Yvonne Ooi

bathroom + kitchen today is published **four** times a year by:

#### Trade Link Media Pte Ltd

(RCB Regis. No. 199204277k)  
101 Lorong 23 Geylang  
#06-04 Prosper House  
Singapore 388399

T: +65 6842 2580  
E: [bathroom@tradelinkmedia.com.sg](mailto:bathroom@tradelinkmedia.com.sg)  
W: [bkt.tradelinkmedia.biz](http://bkt.tradelinkmedia.biz)

#### INTERNATIONAL SALES OFFICES

##### [JAPAN]

Akiyoshi Ojima, ECHO Japan Corporation  
Grande Maison,  
Rm 303, 2-2, Kudan-Kita,  
1-Chome, Chiyoda-ku, Tokyo 102, Japan  
T: 81-3-3263-5065; F: 81-3-3234-2064  
E: [Ojima@echo-japan.co.jp](mailto:Ojima@echo-japan.co.jp)

#### Official Media for



#### Singapore Sanitary Ware Importers & Exporters Association (SSWIEA)

61 Ubi Road 1  
#02-02 Oxley Bizhub  
Singapore 408727  
T: +65 6977 9848  
E: [info@sswiea.org.sg](mailto:info@sswiea.org.sg)  
W: [www.sswiea.org.sg](http://www.sswiea.org.sg)



# ConsBuild ASIA 2022



[www.consbuild-asia.com](http://www.consbuild-asia.com)

2-4 November 2022

EH99, BITEC, Bangkok, Thailand

## Thailand International Construction, Mining and Building Technology Exhibition



For more information, please contact Tel: +66 (0) 94-996-8312 or Email: [sales@mbmarketings.com](mailto:sales@mbmarketings.com)

### Supporters



### Organizer



### Silver Sponsor



### Bronze Sponsors



Follow us  [consbuildasia](https://www.facebook.com/consbuildasia)





026



049



054

**006** editor's note

**010** global news  
events  
corporate

**016** quarterly  
special products

**018** project focus  
an extension on the vineyard  
collection abysses  
the power of material

**029** surfaces  
redesigning floors  
collections

**041** bathroom spaces  
*reflections of the past*  
collections

**053** kitchen spaces  
a kitchen transformation by cabinetry  
stuv 30  
collections

**064** calendar of events



## *Dear Readers*

Turning what some homeowners dread as exhaustive labour into a joyful creative experience was the end result of an entirely new kitchen renovation recently completed in Toronto by Cameo Kitchens and Fine Cabinetry. Hop over to the cover story to read more!



**Nicole Lee**  
Editor

*Nicole Lee*





### Easy Clicker Waste: Making Life Easy

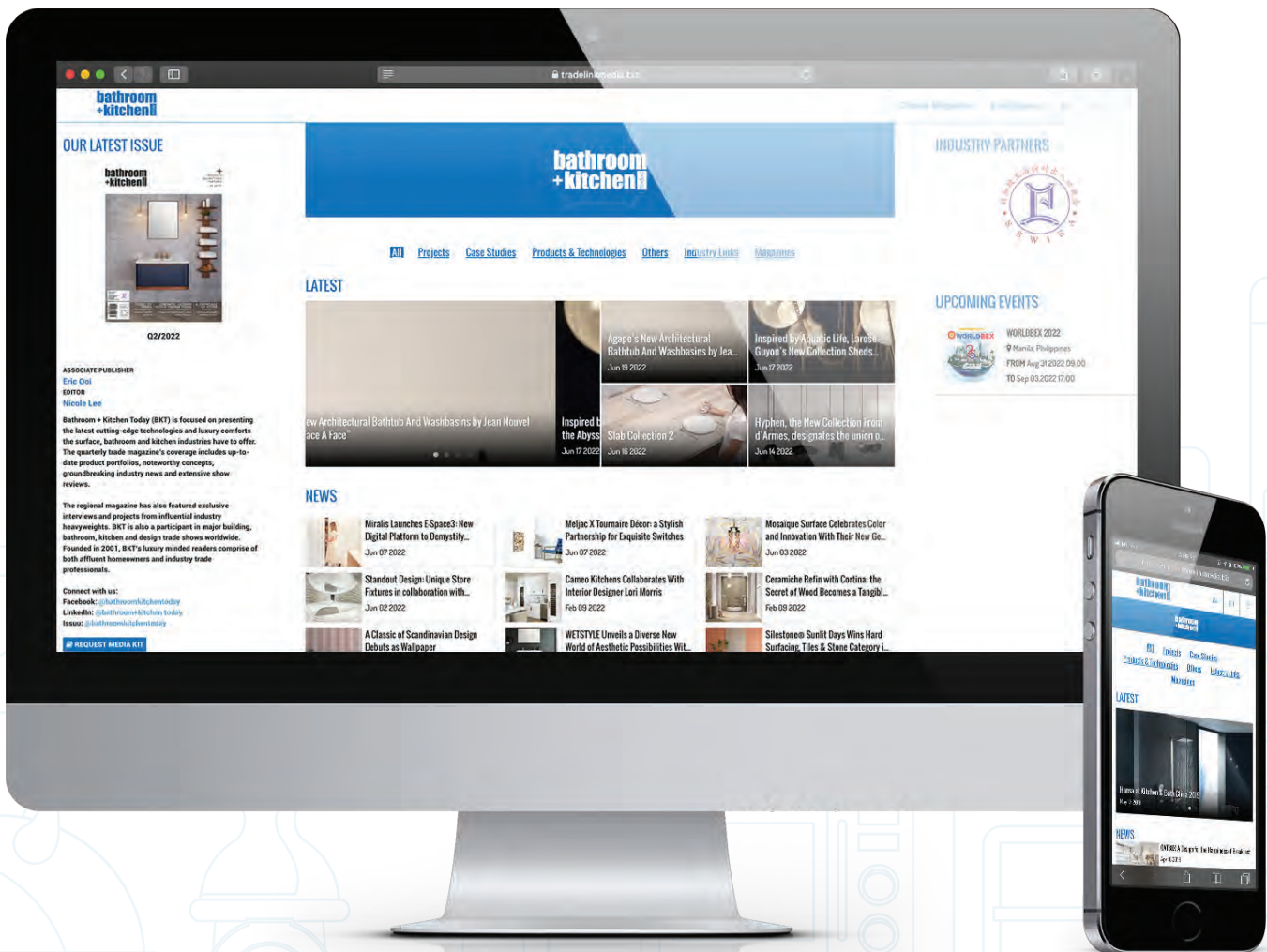
Set to revolutionise the bathroom, the new range of clicker waste systems is an innovative combination of the clicker and plug.

Equipped with a waste body and clicker plug, the system's clicker plug can be easily pulled out or in, making it simple to use and maintain.

Simple, yet functional, the clicker waster system is a perfect addition to any bathroom.



ADD: JIANGSHAN, YINZHOU, NINGBO, CHINA 315191  
TEL: 0574-87641687 FAX: 0574-87641686  
INFO@BOSHENGPLUMBING.COM  
WWW.BOSHENGPLUMBING.COM



# bkt.tradelinkmedia.biz

## Visit our website for the latest information

News In The Industry · Upcoming Exhibitions · Download Magazine Issues







ArchXpo 2022



FIRE &  
DISASTER  
ASIA 2022  
SINGAPORE



SAFETY &  
SECURITY  
ASIA 2022  
SINGAPORE

DESIGN  
ASIA  
2022



# Architecture & Building Services 2022

Sustainability In A Digital Built Environment

iFME  
INTERNATIONAL FACILITY  
MANAGEMENT EXPO 2022

LIGHTING  
ASIA 2022



WORK SAFE  
ASIA 2022  
SINGAPORE



**16 - 18 November 2022**



Marina Bay Sands Singapore  
Sands Expo & Convention Centre | Halls B & C



## ISH CHINA & CIHE AND ISH SHANGHAI & CIHE TO RESCHEDULE IN SPRING AND AUTUMN 2023 RESPECTIVELY

In view of current pandemic circumstances in China, ISH China & CIHE will now be rescheduled to 11 – 13 May 2023 at the New China International Exhibition Center in Beijing. ISH Shanghai & CIHE, also affected by pandemic uncertainties, will be deferred to take place in autumn 2023 at the Shanghai New International Expo Center, with the exact date to be announced later.

Mr Richard Li, Managing Director of Messe Frankfurt (Shanghai) Co Ltd, outlined the rationale behind the decision: “With the evolving situation, we have decided to hold the fairs at later dates. Given the global profile of our exhibitors, the decision was made to ensure the welfare of all participants and to limit the risk of disease transmission. Holding the fairs at later dates will give more confidence to the industry that we can host well-rounded international events. As we continue to adapt during these challenging times, I'd like to express our thanks to all participants for their understanding and support.”

Mr Hongbo Li, Deputy General Manager of CIEC GL events (Beijing) International



Exhibition Co Ltd, added: “Our co-organisers and supporters of the fair, as well as our exhibitors were all looking forward to both the Beijing and Shanghai editions this year

to further showcase their latest products and innovations. However, due to present circumstances, we all believe it is best to delay the fairs to provide as much certainty







to the event's participants as possible. As we look forward to the next editions, we hope that more industry experts will be able to participate alongside the exhibitors in both our trade fair platforms in China."

As leading HVAC exhibitions in Asia, the ISH fairs in Beijing and Shanghai cover HVAC products & technologies, intelligent control, home comfort and plumbing. Returning in 11 – 13 May 2023, ISH China & CIHE will continue to serve as a comprehensive commercial HVAC solutions sourcing platform for China's northern regions. Meanwhile ISH Shanghai

& CIHE will help industry players tap into the east and central HVAC and home comfort markets in China next autumn. For more information about ISH China & CIHE and ISH Shanghai & CIHE, please visit [www.ish.hk.messefrankfurt.com](http://www.ish.hk.messefrankfurt.com) or email [info@ishc-cihe.com](mailto:info@ishc-cihe.com).

The two fairs are headed by the biennial ISH event in Frankfurt, Germany, which is the world's leading trade fair for HVAC + Water which will next take place from 13 – 17 March 2023.

For more information, visit [www.ish.messefrankfurt.com](http://www.ish.messefrankfurt.com)



## HOMEGROWN MARANO FURNITURE LAUNCHES LATEST LUXURY COLLECTION – 京 COLOURS OF PEKING INSPIRED BY BEIJING OPERA

In conjunction with Singapore Design Week, local luxury furniture brand Marano Furniture officially launches the first two of four instalments of their latest collection titled “京 Colours of Peking”. Drawing its design inspiration from two of the four characters, Jing, a prominent male character with striking looks and high social position, and Dan, an elegant female character with soft lines, in the Beijing Opera, this luxurious collection comprises 12 pieces of finely crafted furniture inspired by the intimate play between theatrical costumes, social customs and aesthetics of the Beijing Opera.

Founded in 2019, Marano Furniture seeks to radicalise the norms of furniture design, by gathering young, under-represented designers across Asia to create themed designs made with quality craftsmanship, and showcasing their works on a global platform. Along with its intricate designs, Marano Furniture’s design pieces are sustainably crafted and produced on-demand, with materials acquired from sustainable sources, such as E0 grade plywood and eco-friendly natural veneer.

“I have always been fascinated with Chinese aesthetics. The play between the different design pieces feel like a performance repertoire, bringing the essence of the Beijing Opera to life. The 京 Colours of Peking collection gives breath into the intricate



aesthetics of the Chinese art form, with symbolic pieces quintessential of the Beijing Opera,” says Christopher Lim, Managing Director of Marano Furniture.

### 京 Colours of Peking: Jing

The Jing instalment takes inspiration from the intricate and vibrant countenance of the face of the male role of Jing in the Beijing Opera. The bold, black and gold patterns of the character are showcased through the play between majesty and solemnity in each of the design pieces.

The OLIME Sideboard makes an eye-catching statement, showcasing fluid waves that create a graceful yet strikingly contrasting

image. Delicately created by MARANO’s artisans using controlled precision carving and heat compression, the OLIME Sideboard is born from fine craftsmanship and seamless joinery, a visually compelling masterpiece to behold.

The PICCO Dining Table is fashioned from willow solid wood board of the highest anti-deformation grade and secured on a durable stainless steel bracket. Supported on a solid wood base decorated with a veneer, the PICCO Dining Table is a remarkable expression of Jing’s charismatic integrity and valour. Featuring a luxurious upholstery of Chenille fabric, the PICCO Dining Chair is velvety soft to the touch and





invitingly plush, an indulgent experience in an exceptional design.

Symbolising impartiality and integrity, the VEDRANO 3-seater Sofa exudes a majestic elegance with its simple lines. The sofa comprises a sturdy frame and impeccable hand-stitched upholstery of vibrant colours,

exhibiting the essence of Jing.

As part of this collection, Marano Furniture has also collaborated exclusively with local budding artist Valerie Ng, who will be developing abstract art pieces of the characters Jing and Dan. These pieces will be sold separately and a portion of the

proceeds will be donated to Art Outreach, a non-profit arts intermediary dedicated to promoting visual art literacy, presenting innovative art experiences and supporting the development of art practitioners.

For more information, visit [maranofurniture.com](http://maranofurniture.com)

## GEBERIT PROMOTES SOUTHEAST ASIA'S SUSTAINABILITY EFFORTS WITH PIONEERING ECO-DESIGN

Geberit, a market leader in bathroom systems and sanitary technology, is spearheading the charge for pure, sustainable products with its eco-design. By developing energy-efficient and reliable systems that are high quality and well-designed, Geberit creates added value with the lowest possible energy consumption — for customers, the environment, and society as a whole.

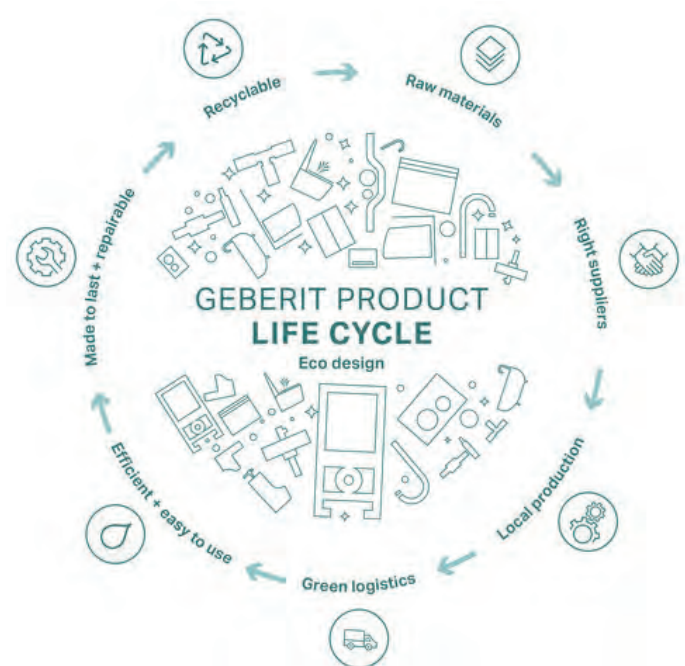
The eco-design principle analyses the entire life cycle of a product in ecological, economic and social terms – from the procurement of raw materials to disposal or recycling.

According to the latest UN Intergovernmental Panel on Climate Change (IPCC), Southeast Asia is one of the world's most at-risk regions regarding climate change. It is now bearing the brunt of global e-waste. As concerns grow around the waste generation and management, Geberit is forging a more sustainable future with long-lasting, durable products that significantly reduce waste, protect the environment, and improve people's lives across the region.

"In light of a worsening climate crisis with more natural disasters, we must all do our part to reduce waste in our building designs, particularly in Southeast Asia, where the effects of global warming are felt the most. For more than a decade and a half, Geberit has used our pioneering eco-design principle to create a sustainable quality of life for people worldwide. As demand for eco-design grows in 2022, we are ready to answer the call with high-quality, durable products constructed from sustainable materials, which reduce waste, and save water throughout their life cycle," says Michael Allenspach, Product and Technical Director at Geberit.

### Indeed iCon-ic: eco-design principles are applied across Geberit's entire product portfolio

Since 2007, over 170 eco-design workshops have been held in product development. Geberit's eco-design principle has since guided the company to design better products than their predecessors from an ecological perspective without sacrificing on quality, functionality, or durability. These principles can be seen in action across the Geberit range, such as in its iCon WC product range. Geberit's wall-hung WCs feature a new flush guide made from 69% recycled ABS plastic. Meanwhile, the iCon Rimfree Plus technology and new flush valve type 212 with flush volumes of 4/2 litres use recycled plastics exceeding 50%. This can save roughly 1,000 tonnes of CO2 yearly. Meanwhile, the Sigma 12cm concealed cistern with Geberit's flush valve 212 reduces



water consumption. The flush is triggered via the recyclable Sigma30 actuator plate fastened in a frame made from 100% recycled ABS.

### Incorporating the eco-design principle across the product life cycle

Geberit's stringent eco-design criteria contribute to the circular economy and are applied to all stages of the product life cycle, from obtaining raw materials to disposal. In addition to selecting the most suitable materials, the continuous search for environmentally friendly, pollutant-free alternatives, and its intelligent resource-saving design, Geberit products significantly reduce waste with a durable design and service life that spans several decades.

With demand for eco-design continuing to rise, Geberit plans to continue using its sustainability criteria to create better products for people and the planet.

For more information, visit <https://www.geberit.com/company/sustainability/>

## THE 2022 NEWS INNOVATIONS OF MATRIX INTERNATIONAL SPEAK THE LANGUAGE OF ARCHITECTURE: FORMAL SYNTHESIS ACHIEVED THROUGH TECHNOLOGICAL INNOVATION WITH THE COLLECTION “EXPERIENCE” DESIGNED BY DANILO FEDELI

Matrix International presents the Experience collection, designed by Danilo Fedeli, the result of a research not only for a specific style but for solutions that respect the environment. Modular sofas, armchair, sideboard, table, chairs and coffee tables form an ensemble for the living and dining area where the idea of coordinated furnishings on a pure aesthetic basis is replaced by a radical design path of analysis of the idea of contemporary beauty with the goal of evolving it towards the real needs of our daily life: values such as the implied durability of the highest quality determine upstream to revise the production cycle and downstream to think about a virtuous life of the product that can be disassembled and recycled.

The use of natural materials such as solid oak or Canaletto walnut combined with extruded aluminium elements, represent the perfect balance of a stylistic path. Matrix enhances a material such as wood used in its primordial full-thickness form thanks to the use of cutting-edge technology for its processing, thinking about a future of substance and concreteness. The same concreteness with which the supports of the various furnishings take shape from the extruded aluminum and therefore speak a single language. The rigorous, geometric shape of the supporting element becomes the recognizable feature of the Experience collection.

The space is considered as a whole around the human being who lives in it, the Experience collection has many possibilities for customization also through chromatic effects. The design sensitivity of the designer has conquered and oriented the production of Matrix International, generating a technically advanced collection with a strong identity able to communicate with the world of architecture.



For more information, visit [www.matrixinternational.it](http://www.matrixinternational.it)



## SINGAPORE BRAND ALTEX LAUNCHES NEW SOLAR-POWERED ZIP BLINDS TO REDUCE ELECTRICITY BILLS AND CARBON FOOTPRINT

With the rising electricity costs in Singapore, local brand ALTEX™, found at mc2, introduces its first-ever Solar ZIP blinds - an affordable vertical sun protection balcony ZIP blinds which runs on a 100% solar-powered technology. In recent years, ZIP blinds has gained huge popularity among local homes with balconies as it serves to protect these spaces against the sun, rain, insects, and more, while bringing users added flexibility, privacy, and air-con retention within their space.

With ALTEX™ Solar, users can enjoy the benefits of these ZIP blinds while they save on electricity bills and #GoGreen to help fight climate change at the same time. Drawing energy from the sun also rids the need for electrical cabling or construction work during installation. Surface mounting and discreet battery integration promise a neat and aesthetically pleasing installation.

Saving energy and money can now start stylishly at home, while homeowners enjoy the benefits of a cooler home that is protected from heat and UV damage.

For more information, visit [mc2.com.sg](http://mc2.com.sg)



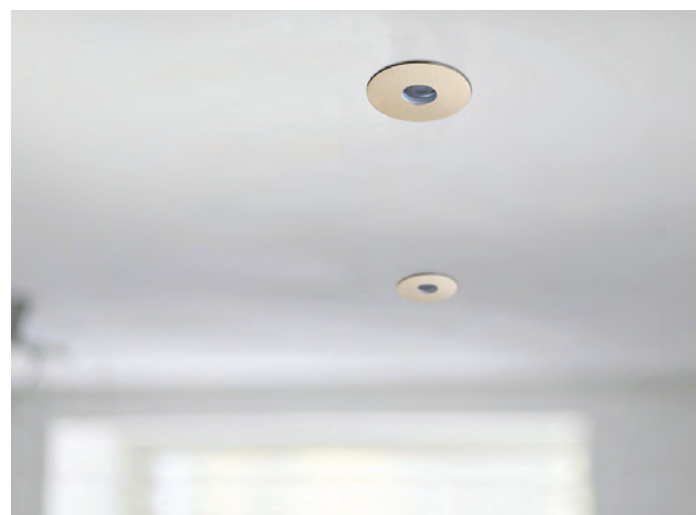
## MELJAC PRESENTS ITS MINI LED RECESSED DOWNLIGHTS

MELJAC, the leader in luxury electrical fittings, has developed two new recessed downlight models, round or square, in solid brass, for false ceilings. They are available in the brand's 30 finishes and blend perfectly with all MELJAC electrical fittings, from light switches to reading lamps and thermostats.

MELJAC's new downlights match all the brand's brass ranges, and they are simple to install – the transformer is positioned in the false ceiling and the brass plate clips directly onto the light. With a protection rating of IP54, they can be installed in bathrooms and kitchens as well as corridors and bedrooms. Clients can choose between direct or asymmetric LED light distribution and warm or cool white. The two models come with a black or white interior.

### About Meljac

Created in 1995 by André Bousquet, the company (90 employees) designs high-quality electrical equipment using the finest materials. With about 15 collections, MELJAC offers architects, decorators, electricians and private individuals a large range of options: switches, sockets, reading lights, casings for thermostats and home automation controls, etc. The brand is renowned for its bespoke creations. All products are 'Origine France Garantie' labeled. MELJAC is the first



company in its business sector to obtain the EPV label (Living Heritage Company).

For more information, visit [www.meljac.com](http://www.meljac.com)

# quarterly

special products



## LOTUS VESSEL SINK

by **Maison Valentina**

This high-end vessel sink will certainly be the centrepiece of your bathroom design. Combining gold details and a magnificent marble stone, the Lotus Vessel sink is the equivalent of elegance. Create a lush and gorgeous ambiance with this item, here beside the statement rug and the wooden washbasin. To create a calming but functional bathroom, there's nothing better than a high-end vessel sink.

<http://www.maisonvalentina.net>

## BLACK DARIAN FREESTANDING

by **Covet House**

The Darian Freestanding draws inspiration from the power of the shield and sphere of protection, as well as the dynamic from its irregular shape. Precise knowledge of production techniques and materials, each with different specialities, from metal-work to stone carving and upholstery. It features a cluster of gold plated brass asymmetrical bars enveloping a black leather structure ending with a Nero Marquina marble sink, that results in a blend of artful and stout personality.

<https://www.covethouse.eu>





## SILVER JADIPAI BATHROOM TAP

by **Dowsing and Reynolds**

Delicate in its style, but bold enough to hold its own, our Jadipai bathroom tap in silver is not to be sniffed at. A wall mounted tap that's the perfect example of classic style with a contemporary twist. Its design is understated and will look stunning over a countertop basin. It has a precision mixing control which gives the perfect flow. This tap ticks all the boxes when looking for new bathroom accessories.

<http://www.dowsingandreynolds.com>



## SERAX BATHROOM ACCESSORIES

by **Top Drawer**

Serax enhances your home, adds personality to your interior, and creates unforgettable moments at the dining table. Relying only on the most passionate designers from all over the globe, we produce traditional handicraft. Serax looks for beauty every day, for the good things that make life worth living, the things that create a home that inspires happiness.

<http://www.topdrawer.co.uk>

# An Extension on the Vineyard

Text and photos by **Larose Guyon**

## **Technical sheet**

**Architects:** *Mahos architectes*

**Masonry, rough work, plastering, painting, electrical:** *Promazur*

**Metal structure:** *Bernabeu ferronnerie*

**Roofing/weatherproofing:** *Histoire de toit*

**Plumbing:** *Energie PCS*

**Structural engineering:** *I2C structure*

**Photos:** *Studio Module & David Maurel*

The addition to this family home was designed for the owners, who wanted more living space and panoramic views of sunsets over the vineyard.

The existing structure, a contemporary local-style villa, is an H-shaped house. Since its construction in 1998, the owners' space requirements have changed. The goal of the project was to add more rooms, and to showcase the surrounding landscape.

## **Site integration**

The existing house overlooks vineyards dotted with training wires strung on steel stakes with a











rusty patina. The contemporary structure of the addition is directly inspired by that landscape, characterized by strong vertical and horizontal lines.

The addition's geometry is grounded in the proportions of the house in the extension of its existing façades. The flat roof is a line of force in the landscape.

The metal structure containing the new rooms is framed by the existing house and the load-bearing wall that braces it.

Metal and glass are intended to make the project disappear into the surrounding landscape. Moreover, the brownish-red colour coordinates with the house's cornice and red shutters.

#### **Interior/exterior**

A versatile, fully glassed-in living area benefits from its dual east/west orientation. A bedroom and a shower room complete the floor. The view through the windows is unaffected when the bedroom door is open. The bathroom is both well-lit and private, thanks to its frosted glass.

When the windows are wide open, the breeze wafts through, as in a hilltop cabin, and a cantilevered deck further extends the interior space. The boundary between inside and outside is thus obscured.

#### **Music room**

A basement music room was built for rehearsals and private concerts. It is accessed through the existing house, making it possible to keep the addition independent, like a small dwelling unit.

The main room is a very well-lit space, thanks to picture windows that admit abundant natural light and create a powerful link with the outdoors.

The music room, measuring 30m<sup>2</sup> (323 sq. ft.), was designed according to an acoustic study, and includes plywood bench seating, matching the adjacent floor. A wall of cabinets gives the room a variable geometry that absorbs sound, while also providing everyday storage space.



Carpets and fabrics are also used to improve the room's acoustics.

The tiered benches in the music room are the result of an interesting technical constraint: the foundations of the addition had to be offset from the existing façade. To avoid losing space, the architects decided to create seats that fulfill that structural requirement, while enhancing the interior space.

This versatile room can be transformed into a home theatre, bedroom, rehearsal space, recording studio, or intimate concert hall.

### Technical challenges

Coordination with the contractors and engineers throughout the design and construction phases changed and enriched the project in both its structural features and finishing work.

The project had a mixed framework, and the junctions between metal elements and masonry were handled with special care. The use of recessed joints, with U-shaped metal pieces, made it possible to forego the parge coat and highlight the normal-profile I-beams.

Rather than adding a new element to the project, the architects used the same structural modules to create downspouts, with rainwater flowing along the I-beams.

The security grates over the windows were replaced with a terracotta lattice, a very common feature in the region. This mashrabiya system mutes direct sunlight and enables continuous airflow.

### About Mahos

Mahos is an architectural studio co-founded by Lucile Maurel and Camille Hours in 2018. Both women are graduates of the Saint-Etienne school of architecture (École d'architecture nationale supérieure), and they share an optimistic and enthusiastic vision of their profession. With great sensitivity to heritage and local history, they consider existing structures to be true project material. The studio is active in a variety of locations.

For more information, visit [mahos.fr](https://mahos.fr)





# Collection Abyssess

Text and photos by **Larose Guyon**

## **Technical sheet**

**Collection:** *Abyssess*

**Designer :** *Larose Guyon*

**Launch:** *May 26, 2022*

**Configuration:** *3, 5 or 8 globes in 2 sizes*

**Materials and finishes:** *dark aged brass, hand textured metal, textured hand blown glass, aged brass chain*

Larose Guyon, a high-end brand infusing life and natural beauty into each of its handcrafted creations, is proud to introduce Abyssess, a sea-inspired lighting collection capturing nature's splendor in its intricate textures, shapes, and finishes. After a full year of development, Abyssess emerges as the latest addition to the poetic line of creations from Larose Guyon, a boutique studio distinguished by its artisanry and exquisite designs of timeless, sculptural works.

"We invested a lot of time in developing Abyssess into something that would be fluid and magical," says Félix Guyon, co-founder of Larose Guyon. "Beyond its functional efficacy, we have infused an air of mystery and otherworldliness into the design."

## **Unwavering attention to detail**

As with all Larose Guyon collections, the magic of Abyssess begins with the unparalleled craftsmanship of the studio's in-house artisans. Painstaking attention to detail ensures that each handcrafted piece contributes to a collection recognized as a functional work of art.











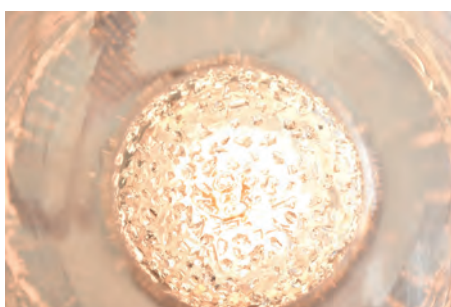
Each globe in the Abyesse collection is hand-blown by a glass artisan in Montreal. Inside each primary globe, an urchin-inspired, flaked inner glass globe highlights the studio's artisanship. The inner globe creates an intriguing seabed illusion, which is further enhanced by the presence of two incongruent brass ball attachments that appear to float like pearls.

"Abyesse is an abstract artistic interpretation of aquatic nature that allows people to really use their imaginations," says Audrée L. Larose, co-founder of Larose Guyon. "It's the beautiful result of numerous attempts to strike a perfect balance, including the decision to use filtered glass in order to control each globe's luminosity, and to further contribute to the seabed illusion."

#### **Textured intrigue**

The magic of Abyesse is achieved through the collection of its parts, with Larose Guyon's





focus on authentic textures contributing greatly to the its sea-inspired mystique. Illumination is provided courtesy of an external source mounted on the outer edge of each primary globe, firing light through the attached internal globe and magnifying its luminosity throughout. Once illuminated, reflections generated within the globes bring them to life, like holograms.

The warmly lit globes are complemented by bold elements with dark aged brass textures, chosen to replicate the appearance of ocean-aged oxidation. A brass ceiling plate facilitates Abysses's centralized wiring, while multiple ceiling-suspended chains, encased in brass tubing, enable the spreading of its configurations, while mimicking the texture of ropes enveloped in seaweed.

"With Abysses, we endeavored to separate the functional parts from the decorative parts," explains Ms. Larose. "In addition to facilitating the manufacturing and installation process, that separation also facilitates asymmetrical dimensions for multiple configurations."

#### A versatile work of art

Abysses succeeds in achieving Larose Guyon's vision of a modular design

to accommodate a multitude of settings, and the studio's investment in experimentation provides its customers wide great flexibility in adapting the collection to their specific needs. Whether illuminating broadly over a long, rectangle dining room table or staircase, or in a dense concentration above a round table or landing, the versatility of Abysses makes it an attractive option for any residential interior planning.

Larose Guyon launches Abysses on May 26th, and it is available in configurations of 3, 5, or 8 globes, in a choice of two sizes. Floor samples will be on full artistic display at the studio's own showroom in Verchères, as well as in partner showrooms in New York City (ROOM) and Los Angeles (TWENTIETH). Additionally, the essence of Abysses has been captured in a short promotional video that embraces Larose Guyon's poetic narrative.

"Our ability to capture contemporary aesthetics through old-world craftsmanship is a tribute to our vision and our commitment to remaining a small and intimate studio," concludes Ms. Larose. "We have been telling stories through our collections for several years now, and we will continue to focus on meticulously handcrafted designs inspired by nature's endless beauty."

#### About Larose Guyon

Founded in 2015 as a fusion of artistic creativity between Audrée L. Larose and Félix Guyon, Larose Guyon designs and manufactures original and exceptional lighting fixtures and home furnishing objects distinguished by their high-quality materials and impeccable craftsmanship. Larose Guyon's unique lighting designs, precious materials, and unparalleled craftsmanship sways between art and function, and within heritage and modernity. The design studio blends inspirations derived from natural wonders, resulting in a combination of interpretations distinguished by finesse and elegance.



Larose Guyon's exclusive, by-appointment-only gallery features a curated selection of the designers' creations, providing visitors with deeper insight into their world of materials, finishes, textures, and tones. All products are handcrafted by local Quebec artisans, and Larose Guyon takes great pride in its discernible approach to refinement and distinction.

For more information, visit [www.laroseguyon.com](http://www.laroseguyon.com)

# The Power of Material

Text and photos by Larose Guyon

## Technical sheet

*Architects: Mahos architectes*

*Masonry, rough work, plastering, painting, electrical: Promazur*

*Metal structure: Bernabeu ferronnerie*

*Roofing/weatherproofing: Histoire de toit*

*Plumbing: Energie PCS*

*Structural engineering: I2C structure*

*Photos: Studio Module & David Maurel*

For Naturedesign, the heart of every project is the material used and its expressive potential. The historic brand from Cerea, near Verona - now in its third generation and led by Thomas Franco - has been a leader in sustainability since the beginning. The legacy continued at Milano Design Week 2022 with collections presented at the Salone del Mobile.Milano. Naturedesign's ethical and aesthetic code has always been rooted in the re-use of materials and the reclamation of rare woods, which are then paired with stone, glass, leather, and metal in unique and ultra-contemporary design works. This also reflects an act of rediscovery of the region's extraordinary and rare traditions of artisan craftsmanship - a heritage to be preserved and protected - including, for example, the traditional glassmaking arts of Murano.

The ILL table symbolizes the brand's philosophy. The top is made of reclaimed wood derived from centuries-old architecture, and has been expertly restored with meticulous and skilled woodworking. Treated with 100% non-toxic and sustainable paints, it preserves the patina of time. The grain of the wood reveals the story of its past, while standing out to tell the story of its future. The base is made of cast glass on cast-iron molds, a typical Murano process that gives this quintessentially sustainable material the structural solidity required.











The forms become essential in the extreme, given that the role of design is to allow the sensory vibrations of the material to emerge. This purity of form returns in the Waterfall table, made entirely of glass, celebrating the material's transparency and lightness. The poetry of material also reimagines a classic accent piece: the River sideboard, both modern and timeless, brings together reclaimed wood, glass, and leather. The connection between domestic spaces and the home that characterizes all of Naturedesign's work is also apparent in the Lymph table, whose sinuous and organic surface evokes biomorphic forms to introduce a new concept of conviviality.

Naturedesign embraces artisan processes, natural materials, and a low environmental impact supply chain that extends to transportation, specifically designed to curb CO2 consumption. Pieces from the latest collections are designed for "air-free" travel, meaning that they are disassembled and bound by highly-compact, plastic-free packaging. Those who choose a table, a sideboard, a chair, or a bookshelf by Naturedesign embrace nature with love and respect.

### **Naturedesign**

Since its founding, Naturedesign has been about love of fine materials, and has been a leader in sustainability. The historic brand from Cerea, Italy, near Verona - now in its third generation and is led by Thomas Franco - focuses on re-use and principles of the circular economy. Its signature material is reclaimed wood from centuries-old architecture, expertly restored with meticulous woodworking and treated with 100% non-toxic and sustainable paints to preserve the patina of time. The purpose of these deliberately simple designs is to showcase the expressive and sensory power of the materials used, with reclaimed wood joined with stone, glass, leather, and metal in unique and creative works. The resulting tables, sideboards, chairs, and bookcases combine craftsmanship and contemporary forms in an always-fresh and original synthesis. The studio's low environmental impact supply chain extends to transportation, specifically designed to curb CO2 consumption. Pieces from the latest collections are designed for "air-free" travel, bound by highly-compact, plastic-free packaging.

For more information, visit [www.naturedesign.com](http://www.naturedesign.com)







# surfaces

# Redesigning Floors

Photos by **Studio CRBN**



### Technical sheet

**Designer:** Imagine, agence design by Mélodie Violet

**Location:** Montreal, Qc Canada

**General contractor:** AK Construction

**Cabinet maker:** Galleria

**Suppliers:** Ciot, Ceragres, Italtac, Soud'Art

**Lighting:** Artemide, Muuto, Moooi



Adding to a striking portfolio marked by creativity and high-quality interior design, Imagine, studio design by Mélodie Violet, proudly introduces house Rio, a residential renovation project in Montreal. Completed for a young couple purchasing their first home, the focus of the project was on completely redesigning the gutted interior of a house devoid of alterations for approximately 20 years.

“The clients had a pretty good idea of the basic layout they wanted, and I was able to infuse their vision with some creative details,” explains Mélodie Violet, interior designer and founder of Imagine. “The elements that I proposed create a curvier and elegant interior, with a very bright and cheerful atmosphere.”

### A blank slate

Imagine’s approach began with a complete redesign of the ground floor layout, with one exception, the placement and infrastructure of a staircase ascending to the second level. The original entrance to the home frames the staircase as an entry centrepiece, and newly installed double doors of glass and black metal framing further contribute to that visual presentation. While its positioning was retained, the staircase itself was given a very detailed facelift that sets the tone for transitions throughout the home. Curved maple landing steps begin the ascent on a staircase bordered by curved, bright white walls, contrasting black metal strip railing, and a back wall of glass providing transparency to the upper level.

The staircase sets the theme for the entire home, marked by transitions and connectivity derived from a continuity of many of those same design elements. Repetition of flowing lines, curves, and applications of white, black, and brass detailing help create smooth transitions between rooms that were previously compartmentalized. That sense of connectivity is further enhanced with a broad expansion of previously small windows, and the addition of patio doors that draw in abundant natural light.

### Designing transitions

To the left of the staircase, a formal living room transitions into a more private family TV room. To the right, the kitchen located behind the staircase. The bright kitchen features white walls, light-colored hardwood floors, quartz countertop and backsplash, brass shelving and faucets, and an integrated walk-in pantry. Black chairs and a black table base in the adjacent breakfast nook provide a stark contrast to the bright white kitchen. From the kitchen, a large archway transitions to the formal dining room as one of multiple archways that serve as transitional demarcations between the ground floor living spaces, all appointed with custom-designed furnishings.

### Selective illumination

Round, curvy, Scandinavian-style lighting selections also play a critical role in the redesign, with each fixture uniquely chosen by Mélodie Violet.

“The goal was to enhance the settings, without being overwhelming,” explains Ms. Violet. “For instance, we chose simple elegant white glass globes, installed at different heights, to ‘accompany’ the staircase, rather than to outshine it.”

The kitchen lights also serve as functional complements to the intricate design details of the space, including wall-mounted lamps above the backsplash, and modern, direct lighting cylinders above the island’s quartz countertop that are very convenient for cooking. A pendant lamp rises above the dinette breakfast table, while the unique ambiance of the formal dining room is enhanced by the sculptural aesthetics of an artistic fixture from Moooi.

### No place like home

The upper level of house Rio is comprised of a master bedroom and bathroom, three additional bedrooms with two additional bathrooms, an office, and a laundry room. The master bathroom was a point of focus, and Imagine designed a layout that featuring a double shower, a large freestanding bathtub, a double vanity with multiple storage components,





and a retro lighting mirror, all highlighted in a seamless continuation of white, beige, and brass. The base of the shower features light coloured tiles, with the walls adorned with the same tiles, but in a herringbone form.

"We are pleased to have succeeded in creating a bright and spacious home for the long term, and one that offers the clients the flexibility to expand in the future to accommodate acquired possessions from their lives and travels," concludes Ms. Violet. "Along the way, it will truly feel like home, and will be conducive to entertaining friends and family quite comfortably for years to come."

In 2022, Mélodie Violet launched Matière à Vivre, an initiative responding to growing demand from international clients seeking accompaniment through the personalized decoration of their interiors.

Matière à Vivre complements the extensive expertise of Imagine, topping off a complete service offering for its clients in North America and Europe.

For more information on Matière à Vivre, visit [www.matiereavivre.com](http://www.matiereavivre.com)

redesigning floors | surface feature









# Castello Beige Porcelain Tiles

by **Porcelain Superstore**

With artfully chiselled edges and a unique flagstone size, the Castello tiles are the kind of stone flooring you'd expect to find in a converted barn or Tuscan farmhouse. Their warm colouring, varied tones and lived-in styling are just perfect if you're after flooring that's full of character and soul. There's just one small difference - these beautiful tiles are actually made from porcelain, not real travertine. So while they have all the beauty and charm of the natural material, there's none of the drawbacks. These tiles are easier to live with, don't need to be sealed and will keep their classic looks forever.

<http://porcelainsuperstore.co.uk>







# Abstract Silhouette

by **Lime Lace**

Be bold, be vibrant and move out of the shadows with Silhouette by Ohpopi. A brand new launch to bring colour and style to your interior setting, stand out from the crowd and create a feature wall or paper a whole room with a modern design that doesn't lack style or substance. Available in 5 contemporary colourways; Parma Violet, Taffy Cream, Amber & Lapis, Emerald & Peach and Citrus Punch. There's sure to be the perfect one for your colour scheme.

[www.limelace.co.uk](http://www.limelace.co.uk)







# Palmikko Dusky Pink

by **Feathr**

The Palmikko wallpaper is created with gorgeous Scandinavian motifs and colours that encourage relaxation and restraint. This pink modern Scandinavian stripe wallpaper bears stripes that appear to be whimsical ropes and would fit well in a family room or a child's bedroom.

[www.feathr.com](http://www.feathr.com)



# Hallway Haven in Marble

by LUXXU

The Hallway offers a heightened lifestyle experience with access to stunning mountain views. It highlights a clean aesthetic enhanced by marble features, including a timeless Nero Marquina sculpture and a unique console in Estremoz marble by Brabbu, inspired by one of the most famous monuments in the world. Furthermore, LUXXU's Waterfall II wall lamp illuminates the area with a unique glow courtesy of its gold-plated brass frames and crystal tubes.

[www.luxxu.net](http://www.luxxu.net)







# bathroom spaces



# Reflections of the Past

Text and photos by **Firm Architects**







The wish of the client was a special private residence in Amsterdam. The aim was to create an honest, masculine, and architectural space with the largest possible usable floor space. No standard home, no compromises. A sustainable apartment. Unique and made to measure. Firm architects designed and realized a conceptual living environment from scratch.

#### Environment

The floor of the building, located in the popular district De Pijp, was formerly used as an attic and was not suitable for living in. To turn this old attic into a livable space, the

previous owner raised the roof about fifty centimeters a few years ago. After this, it was sold as a renovation object to the current owner.

#### Concept: "reflections"

The new elevation of the space was realized by making a ring of dirty masonry around the old base. Laying the largely renewed roof beams on top. This principle of the space itself, a new elevation on an old basis, has become the starting point for the design. In the design, the entire space is visibly "cut through." This cross-section is placed at a height of 95 centimeters above the floor.





Above the horizontal cross-section, everything is new and covered in rendered and isolated walls. Sleek and finished. Everything below this line is old or a reflection of it. The walls here are bare and rough. The use of dark mirrors, unfinished zinc sheets, and rough bricks creates a special composition of materials. The zinc part above the line reflects a lot of light into the room, but the reflection itself is blurry. The dark mirrors reflect less light but do give a sharp image. This makes everything above the "section" a new interpretation and everything below a reflection of the old.

The line at 95 centimeters has both a practical and a more poetic origin. It is the height of kitchen doors and railings. And it is the central point of a man's body. Standing with your lower body in the old and your upper body in the new reflects being rooted in the past and looking to the future. Firm architects thus centralizes the physical user in its design. The concept, therefore, is named "reflections of the past." This gives the premise of the space itself an architectural translation in the design and creates a clear difference between old values and new interventions. This conceptual approach to space and its rendering in all custom-made elements is characteristic of the work of Firm architects.

#### **Space layout and material use**

The journey through the apartment starts when you open the front door. The hall is painted all black and the old staircase is bare and rough. Above that is a custom perforated zinc staircase. It hangs 95

centimeters above the floor and connects the apartment with the roof terrace. The light of the roof hatch shines through the perforations down to the dark entrance. If you look up, you can see the sky. At the top of the stairs in the living room, your gaze is directed outwards through the sliding glass door, which occupies the entire width of the building. The profile of this frame is concealed in the walls, floor, and ceiling. This creates an almost frameless facade of glass in a place where originally there were only two small windows.

The living room is an open-light space that can be connected to the master bedroom by means of a large wooden sliding wall. A television and cupboard space is located behind 900 mm wide custom doors that open smoothly to the side.

In order to make the space appear as large as possible, Firm architects has chosen to place a single volume in the space. Except for the living space and the master bedroom, all other functionalities such as bathrooms, toilets, laundry room, and guest room are concealed in this reflective box. Access to it is made invisible by a pivot door finished in the same materials. A particular part of the mirror cladding of the block is actually not a mirror, but reflective glass. This semi see-through from the living room to the bathroom. A skylight has been placed above the shower so that you can shower under an open sky. Flooding the bathroom with daylight.



### Climate

The fully openable glass facade on the south facade provides natural heating. The 17 cm floor insulation, the insulated walls, and the form of the outside insulated roof ensure the inside temperature remains stable. The single large net curtain can cover the entire rear facade, but when opened it does not block any part of the sunlight coming in. This is due to the curved rails on which it hangs, ensuring maximum heating on cold days, whilst on sunny days in closed state ensuring not too much heat enters the house. In the meantime, the wind can blow through it. The ventilation it provides is important for good temperature management. The roof hatch above the entrance on the side of the house is electric and can be opened on hot days. The perforated zinc staircase under the hatch reflects most of the sunlight and because the warmer air can escape at the highest point of the space, a natural draft is created. Firm architects borrowed this natural ventilation principle from tropical architecture. This keeps the house pleasantly cool in the summer. In winter, the insulation keeps the heat in. As a result, the gas consumption for heating is only a mere 1/5th of a regular apartment.

### Poetry

Firm architects has tried to surprise the client with a conceptual distinguishing house elaborated on all aspects of a design. A unique place to unfold. The design freedom that was provided has led to a special house with a story.

### About Firm Architects

At Firm, we believe that design affects the quality of our lives. In cities, in buildings, in offices, in our homes. In 2017, Niek Joanknecht joined Carolien Roos at Roos Interior Architecture which shortly after became Firm Architects.

Firm is not only about the aesthetics of architecture. Having a background in project management as well enables us to deliver a smooth process for our clients. With strong accuracy, we manage budgets and planning. We engage clients in the process and are driven by extraordinary results.

For more information, visit [www.firmarchitects.com](http://www.firmarchitects.com)





The  
so-called  
future  
is now.  
Achieve  
extraordinary  
quality.





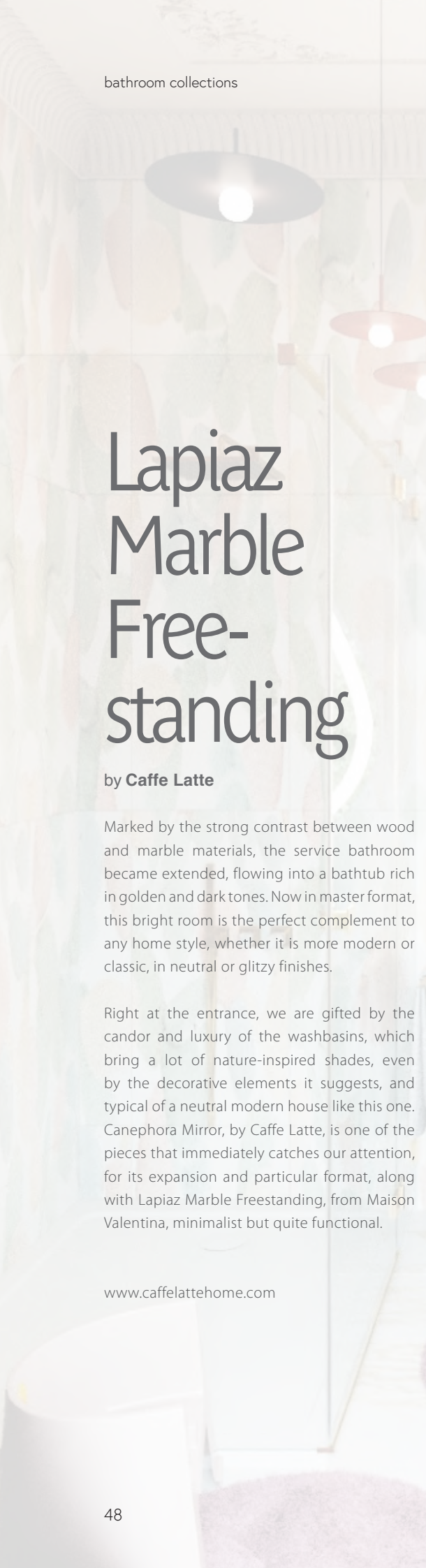
# Bathtub Faucet

by **Kon International**

Use the full range of Kavale products to create a spacious and comfortable bathroom. The so-called future is the present, exquisite and perfect texture, each piece is a masterpiece created by Kefu engineers, the collision of supremacy and practicality, simplicity also reveals details everywhere. Indulge in an immersive experience with Kavale.

[www.kon.com.cn](http://www.kon.com.cn)





bathroom collections

# Lapiaz Marble Free- standing

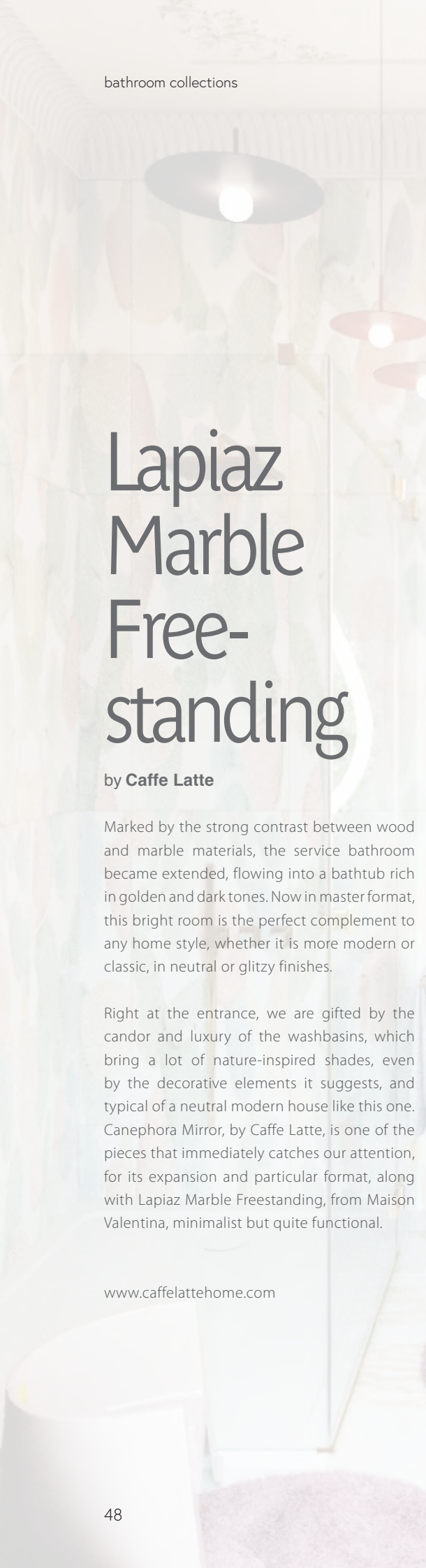
by **Caffe Latte**

Marked by the strong contrast between wood and marble materials, the service bathroom became extended, flowing into a bathtub rich in golden and dark tones. Now in master format, this bright room is the perfect complement to any home style, whether it is more modern or classic, in neutral or glitzy finishes.

Right at the entrance, we are gifted by the candor and luxury of the washbasins, which bring a lot of nature-inspired shades, even by the decorative elements it suggests, and typical of a neutral modern house like this one. Canephora Mirror, by Caffe Latte, is one of the pieces that immediately catches our attention, for its expansion and particular format, along with Lapiaz Marble Freestanding, from Maison Valentina, minimalist but quite functional.

[www.caffelattehome.com](http://www.caffelattehome.com)

48



bathroom collections

# Lapiaz Marble Free- standing

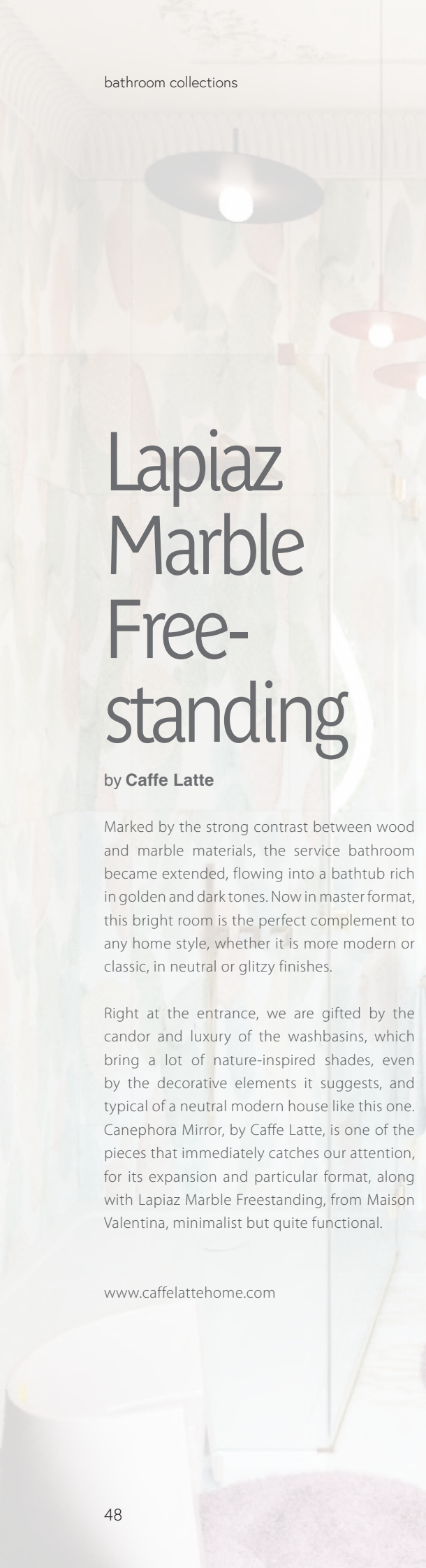
by **Caffe Latte**

Marked by the strong contrast between wood and marble materials, the service bathroom became extended, flowing into a bathtub rich in golden and dark tones. Now in master format, this bright room is the perfect complement to any home style, whether it is more modern or classic, in neutral or glitzy finishes.

Right at the entrance, we are gifted by the candor and luxury of the washbasins, which bring a lot of nature-inspired shades, even by the decorative elements it suggests, and typical of a neutral modern house like this one. Canephora Mirror, by Caffe Latte, is one of the pieces that immediately catches our attention, for its expansion and particular format, along with Lapiaz Marble Freestanding, from Maison Valentina, minimalist but quite functional.

[www.caffelattehome.com](http://www.caffelattehome.com)

48



bathroom collections

# Lapiaz Marble Free- standing

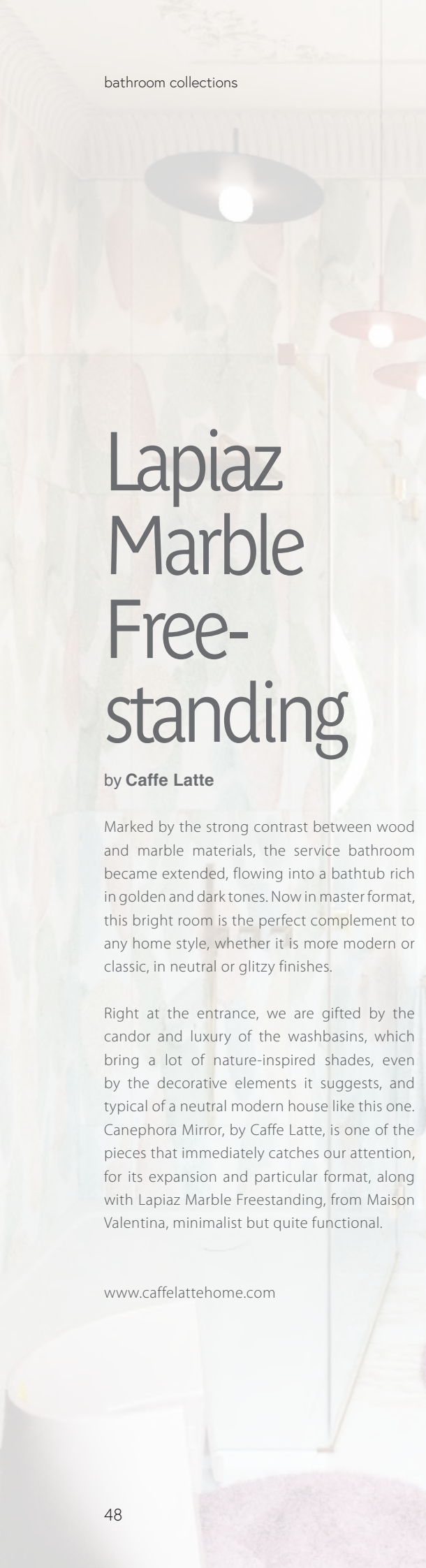
by **Caffe Latte**

Marked by the strong contrast between wood and marble materials, the service bathroom became extended, flowing into a bathtub rich in golden and dark tones. Now in master format, this bright room is the perfect complement to any home style, whether it is more modern or classic, in neutral or glitzy finishes.

Right at the entrance, we are gifted by the candor and luxury of the washbasins, which bring a lot of nature-inspired shades, even by the decorative elements it suggests, and typical of a neutral modern house like this one. Canephora Mirror, by Caffe Latte, is one of the pieces that immediately catches our attention, for its expansion and particular format, along with Lapiaz Marble Freestanding, from Maison Valentina, minimalist but quite functional.

[www.caffelattehome.com](http://www.caffelattehome.com)

48



bathroom collections

# Lapiaz Marble Free- standing

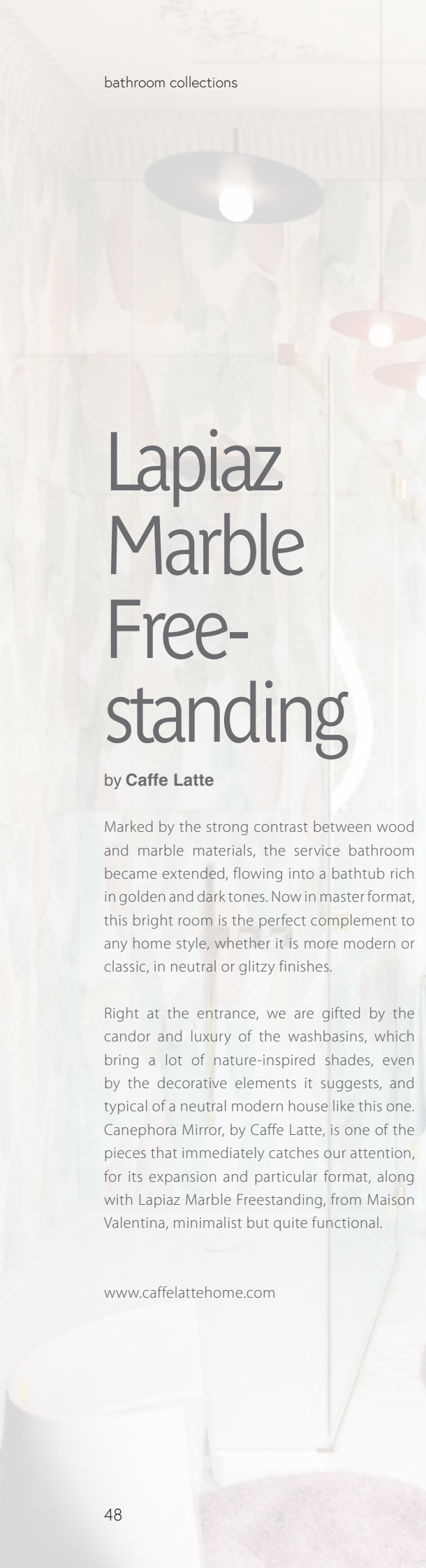
by **Caffe Latte**

Marked by the strong contrast between wood and marble materials, the service bathroom became extended, flowing into a bathtub rich in golden and dark tones. Now in master format, this bright room is the perfect complement to any home style, whether it is more modern or classic, in neutral or glitzy finishes.

Right at the entrance, we are gifted by the candor and luxury of the washbasins, which bring a lot of nature-inspired shades, even by the decorative elements it suggests, and typical of a neutral modern house like this one. Canephora Mirror, by Caffe Latte, is one of the pieces that immediately catches our attention, for its expansion and particular format, along with Lapiaz Marble Freestanding, from Maison Valentina, minimalist but quite functional.

[www.caffelattehome.com](http://www.caffelattehome.com)

48



bathroom collections

# Lapiaz Marble Free- standing

by **Caffe Latte**

Marked by the strong contrast between wood and marble materials, the service bathroom became extended, flowing into a bathtub rich in golden and dark tones. Now in master format, this bright room is the perfect complement to any home style, whether it is more modern or classic, in neutral or glitzy finishes.

Right at the entrance, we are gifted by the candor and luxury of the washbasins, which bring a lot of nature-inspired shades, even by the decorative elements it suggests, and typical of a neutral modern house like this one. Canephora Mirror, by Caffe Latte, is one of the pieces that immediately catches our attention, for its expansion and particular format, along with Lapiaz Marble Freestanding, from Maison Valentina, minimalist but quite functional.

[www.caffelattehome.com](http://www.caffelattehome.com)

48





# Linckia

by **PullCast**

This bathroom interior highlights a powerful combination of white and gold accents that are further enhanced by the presence of an ocean-inspired hardware piece: Linckia. Inspired by the vastness of starfishes, Linckia is a range of graceful furniture drawer handles that are bound to give a more seafaring touch to one's home decoration.

<https://pullcast.eu>



# Symphony Vessel Sink

by **Maison Valentina**

Imagine entering this magnificent bathroom hotel...Here you will find our Symphony Vessel Sink, Timeless Three Hole Mixer Tap, Gold Onyx Surface and Waterfall Pendant! With our ATO (Assemble To Order) Collection, you are able to choose different Maison Valentina's products and assemble them to complete your own luxury design. Specially thought for Hospitality & Contract projects, this collection will fulfill every single dream you have!

[www.maisonvalentina.net](http://www.maisonvalentina.net)





# Animal Stools

by **Circu**

The Animal Stools collection owns an exclusive design that promises to awaken children's friendship with animals. When it comes to children's interiors, these stools introduce a modern design, always ensuring that the bedroom reflects the child's personality and is both fun and young. This stool series allows parents to choose the animal their kids like the most, being possible to choose from bird, shark, and elephant.

[www.circu.net](http://www.circu.net)



# Hanna Pendant Lamp

by **DelightFULL**

Hanna is a vintage pendant lamp that features a glossy black shade outlined by a copper finish, giving it a lovely contrast. Elegantly made in brass by artisans who applied delicately an ancient technique called hand metal spinning, if you style this suspension lamp alongside a mid-century decor it will provide your room a striking, elegant look. Hanna pendant lighting brings together a visually appealing aluminum bell lamp shade and a customizable versatility by way of finishes. This one light pendant provides abundant light, while adding style. The sleek lines with hints of contemporary flare depict sophistication and grace, making this copper pendant lamp great as a bathroom pendant lighting or as bed reading light.

[www.delightfull.eu](http://www.delightfull.eu)







# kitchen spaces



# A Kitchen Transformation by Cabinetry





Turning what some homeowners dread as exhaustive labour into a joyful creative experience was the end result of an entirely new kitchen renovation recently completed in Toronto by Cameo Kitchens and Fine Cabinetry.

"I just love it, as it achieves what I wanted, and Cameo did a great job," says homeowner Marie Kagan. "Cameo was very responsive and have great attention to detail. They are very creative and have a vaery good reputation as cabinet makers. My decision-making process on the look, feel, quality, and materials took about a year, and Cameo was very patient with me to ensure I would be getting the kitchen I wanted."

"Marie had a very traditional kitchen with dark countertops and wanted a more contemporary look," says Marwan Rizek, founder and principal of Cameo Kitchens and Fine Cabinetry. "For this, we used white wood for the cabinets, balanced by a dark grey island, featuring quartzite stone from Brazil. As featured accents, we incorporated brushed nickel hardware in a variety of sizes. The end result is a more contemporary, brighter look and feel, which is now a signature design statement of her home."

#### About Cameo Kitchens

Founded in 1983 and today employing 60 skilled professionals, Cameo Kitchens and Fine Cabinetry is a prolific company



whose craftsmanship can be found in some of the finest homes and boutique-living condominiums in the Greater Toronto Area. Its highly regarded reputation in the industry for customized product design and quality, as well as personalized customer service, allows it to collaborate with some of the city's most prominent developers, architects and designers.

For more information, visit [www.cameokitchens.com/about/](http://www.cameokitchens.com/about/)







# Stuv 30



### Technical sheet

**Product name:** Stûv 30

**Appliance category:** Wood-burning stove

**Available models:** Stûv 30-compact, Stûv 30-compact H and Stûv 30 compact ONE BLACK

**Exterior:** Steel

**Interior:** Cast iron

**Colour:** StûvGrey for Stûv 30-compact and Stûv 30-compact H, StûvBlack for Stûv 30-compact ONE BLACK

**Certification:** EPA

**Power:** Up to 900 sq.ft. (31,000 BTU)

**Details:** Three modes of use, 360° rotation, ash pan built into the base, easy to light, produces little ash, possibility of connecting to the outside air, low fine particle emission rate, suits all types of decors, makes the fire the focus, energy-saving and easy maintenance.

Timeless and revolutionary, the Stûv 30-compact is positioned in the industry as a slow-burning wood stove that can be enjoyed in several ways. Its versatility creates the perfect balance between output, performance and pleasure.

### A patented concept

The Stûv 30-compact and Stûv 30-compact H have three doors for three modes of use. This concept, which has an international patent, has



stuv 30 | kitchen feature

revolutionized the wood-burning stove and fireplace industry.

The design allows users to choose the ambiance they want. A crackling open fire will create a more inviting, seductive atmosphere, while closing the glass-paned door will magnify the flames and warm the room. Closing the full door is ideal during the night, to wrap the house in a soft, comforting heat.

This stove can also be turned 360° degrees to face any direction. When placed in the heart of the home, residents and visitors can enjoy the fire no matter what activity is taking place.

One important feature sets the Stûv 30-compact H apart from other wood-burning stoves on the market: its optional heat accumulator that extends the heating time. This way, when the fire goes out, heat continues to be released throughout the house for several hours.

### An addition to the Stûv 30 family

The Stûv 30-compact ONE BLACK recently joined the Stûv 30 family of wood-burning stoves. This model is ideal for customers who want the Stûv 30-compact's main advantages, but at a lower cost. The ONE BLACK version was designed and manufactured to give a larger number of consumers a chance to enjoy both form and function.

This new model belongs to the "wood-burning stoves with a single door" category. It has a glass door that gives a generous view of the fire. Its single door and colour are the main features that set it apart from the Stûv 30-compact, which has three doors for three different operating modes. Also able to be rotated 360 degrees, the Stûv 30-compact ONE BLACK can easily be incorporated into a variety of projects to reinvent the fireplace area.

### Compliant with environmental standards

The three models available are all EPA-certified.



This means they meet the environmental standards set by the United States Environmental Protection Agency (EPA), requiring a fine particle emission rate of less than two grams per hour.

Moreover, the Stûv 30's combustion techniques optimize its efficiency while eliminating its environmental impact.

### About Stûv America

Founded in 1983 in Europe, Stûv designs and manufactures wood-burning and pellet stoves and fireplaces. Since 2007, Stûv appliances have been adapted and certified in Canada to meet the standards of the North American market.

Stûv thinks globally while acting locally. Local actions include establishing a manufacturing plant in Canada that is exclusively dedicated to the North American market. The company only purchases high-quality raw materials and works with the best local suppliers.

Stûv America offers 35 wood-burning stove and fireplace models that combine performance and aesthetics.

For more information, visit [stuvamerica.com/en/products/stuv-30/](https://stuvamerica.com/en/products/stuv-30/)









# Freddo Counter Stool

by **Caffe Latte**

The world's longest cultivated coffee, all the way from Yemen, Moka is known for its intriguing nuance - just like the Moka bar chair. This simple yet refined chair can be featured on an endless array of settings and match an infinite number of styles, from a contemporary project to a modern interior design, without being too discreet. Solid woods and vellutino fabrics make this minimal design a must in any restaurant or bar.

[www.caffelattehome.com](http://www.caffelattehome.com)







# Cosmo- politan Skyline Cabinet Handle

by **PullCast**

Skyline is a part of one of the brand's most exclusive collection: Cosmopolitan. This clean-lined collection was strongly based on the vibrant nature of the largest metropolis around the world, thus showcasing a more architectural take and a cultural-oriented focus. Consequently, it can be the perfect placement for bathroom or kitchen cabinetry or a unique statement in a hotel's front door, among other furniture designs.

<https://pullcast.eu>







# DUKONO Counter Stool

by **Brabbu Design Forces**

As one of Indonesia's most active volcanoes, Dukono embodies an unpredictable strength. Just like DUKONO Counter Stool, upholstered in velvet, with legs in black lacquer matte and brushed aged brass details. Place it in modern home decor and watch this velvet counter stool fill the room with its strong attitude.

<http://brabbu.com>



NOVEMBER 2022

**ConsBuild ASIA 2022** 📖 3  
November 2 – 4  
BITEC  
Bangkok, Thailand  
Website: [www.consbuild-asia.com](http://www.consbuild-asia.com)

NOVEMBER 2022

**Architecture & Building Services 2022** 📖 9  
November 16 – 18  
Sands Expo & Convention Centre  
Marina Bay Sands Singapore (Hall B & C)  
Singapore  
Website: [www.architecturebuildingservices.com.sg](http://www.architecturebuildingservices.com.sg)

JULY 2023

**ARCHIDEX 2023** 📖 1  
July 26 – 29  
Kuala Lumpur Convention Centre  
Kuala Lumpur, Malaysia  
Website: [www.archidex.com.my](http://www.archidex.com.my)

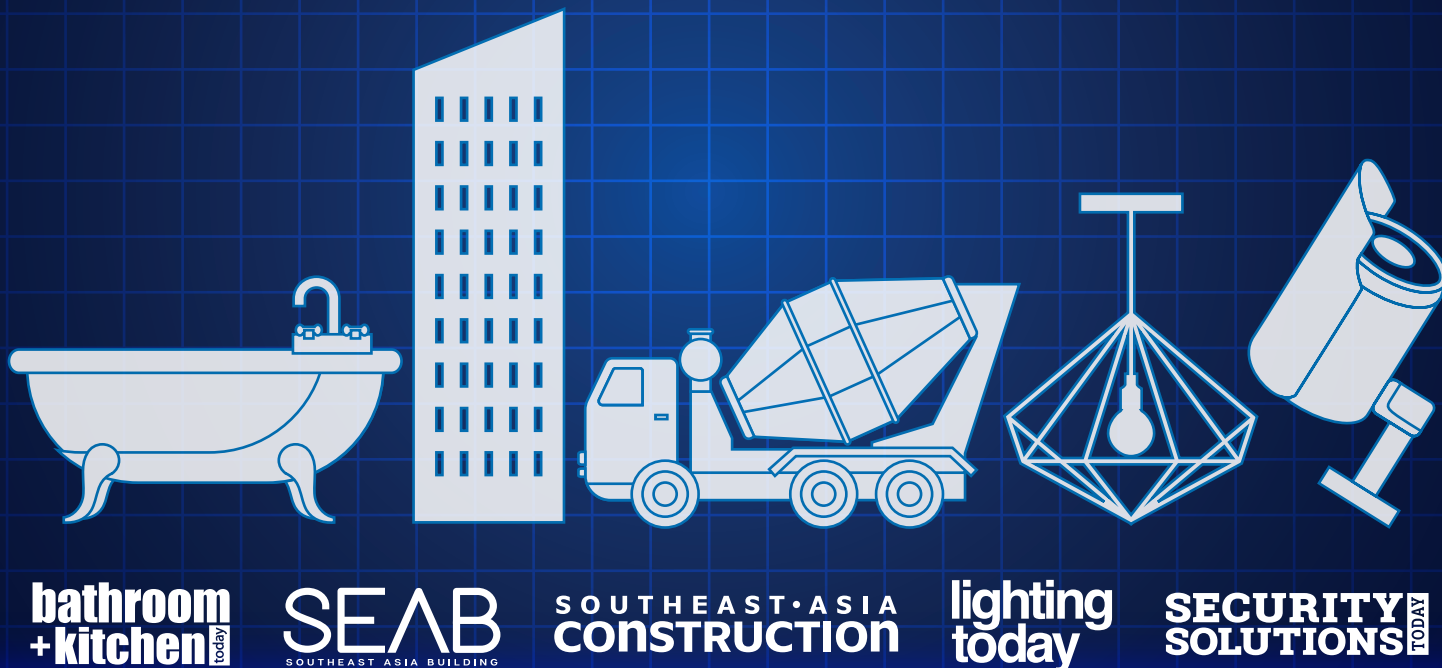


Kon International	📍 China	☎ +86 21 5117 1788	✉ <a href="mailto:info@kon.com.cn">info@kon.com.cn</a>	🌐 <a href="http://www.kon.com.cn">www.kon.com.cn</a>	📖 IFC
Ningbo Bosheng Plumbing	📍 China	☎ +86 574 8764 1687	✉ <a href="mailto:info@boshengplumbing.com">info@boshengplumbing.com</a>	🌐 <a href="http://www.boshengplumbing.com">www.boshengplumbing.com</a>	📖 7
Duravit	📍 Vietnam	☎ +84 28 6299 9092	✉ <a href="mailto:phuc.nguyen@vn.duravit.com">phuc.nguyen@vn.duravit.com</a>	🌐 <a href="http://www.duravit.com">www.duravit.com</a>	📖 OBC



**Download**  
our e-magazine at  
[bkt.tradelinkmedia.biz](http://bkt.tradelinkmedia.biz)





We reach out to various segments of the professional readers within the building, construction, security, bathroom and lighting industries across Asia-Pacific region with our specialised publications in print and digital formats as well as on social media platforms.

**Visit our website [www.tradelinkmedia.biz](http://www.tradelinkmedia.biz)  
for more information.**



Scan to visit our website

**TRADE LINK MEDIA PTE LTD**

101 Lorong 23 Geylang #06-04 Prosper House Singapore 388399 Tel: (65) 6842 2580 Fax: (65) 6745 9517  
[info@tradelinkmedia.com.sg](mailto:info@tradelinkmedia.com.sg) | [www.tradelinkmedia.biz](http://www.tradelinkmedia.biz)





WHITE TULIP  
BY STARCK

[www.duravit.com](http://www.duravit.com)